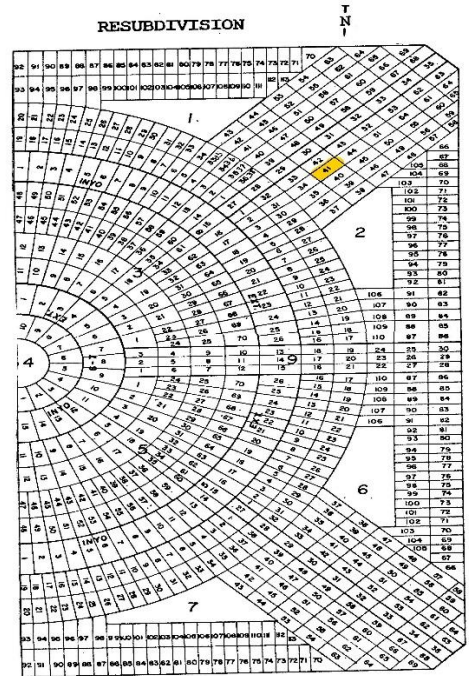
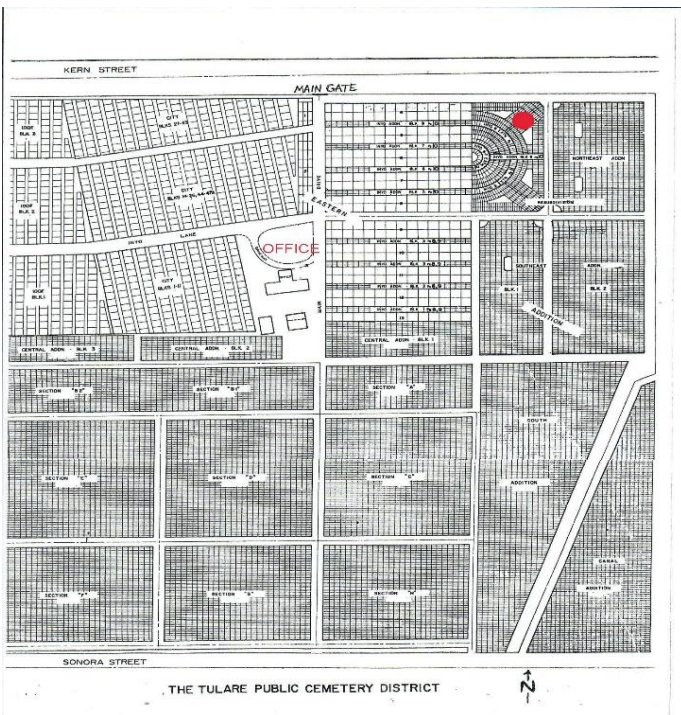
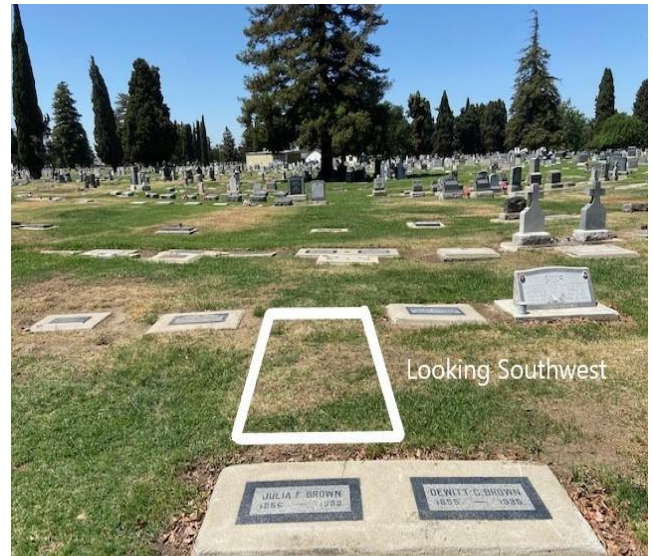


Tulare Cemetery District is Taking Competitive Bids on a Burial Plot at the Kern Cemetery

This is an opportunity to plan for future burial in the Tulare Kern Cemetery as a result of the Tulare Cemetery District recently purchasing a burial right from the previous owner. The burial right for this plot being individually bid upon is located in Kern Cemetery Resub area, Block 2, Grave 41, a double depth grave with a tall headstone marker allowed. There are upright stakes placed on this burial plot in the northeast portion of the Kern Cemetery at 900 E. Kern in Tulare. Two photographs of the plot and a map of the Kern Cemetery is provided on this site. The cost of the burial right is for the plot only and does not include the actual burial expense. For each burial right you can assign up to six people in the plot, for example: two caskets and four cremations, only the owner of the burial right can assign people to this plot. If you have any questions please feel free to contact Tulare Public Cemetery District at (559) 686-5544 or stop by the office at 900 E. Kern Ave in Tulare. You can also visit us at www.tularecemetery.net



Looking Northeast



Looking Southwest